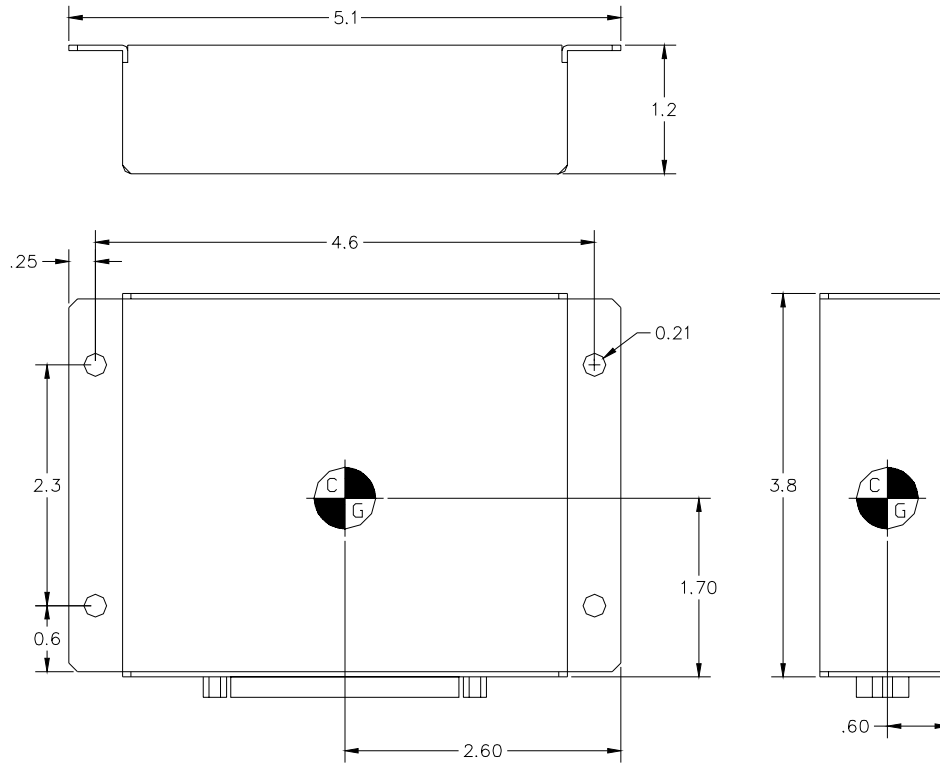


SRU 1-623
 12 Pole Switching Unit
 Part Number 305021-00

Installation Sheet
PMA Approval Pending

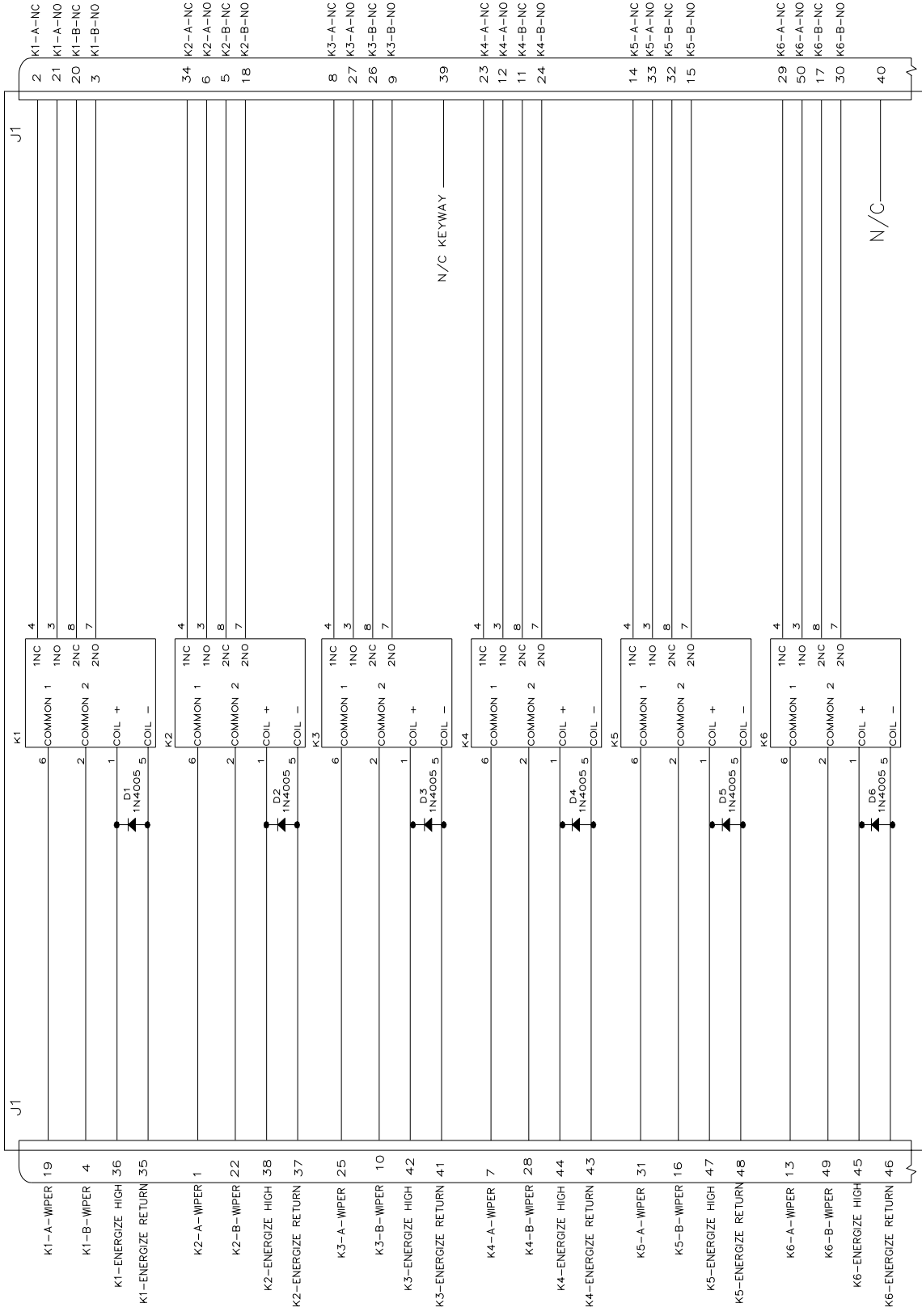


SRU 1-623 Mechanical Dimensions

Electrical		Mechanical		Environmental	
Operating Voltage:	27.5 VDC	Length:	5.1"	Operating Temp:	-55 to +55 degrees C
Max Current:	2 Amps per contact	Depth:	3.8" (less connector)	Operating Altitude:	70,000 feet
		Height:	1.2"	DO-160C Env. Cat:	E1BBA[(S2)(U2)]XXXXXXZZAZZUL
		Weight:	.46 lbs		

Continued Airworthiness

Maintenance of the SRU 1-623 is on condition only. No schedule maintenance is required.



SRU 1-623 Interconnect Wiring Diagram and Schematic